

About Goodwill

Founded in 1948, Goodwill Industries of Southern New Jersey & Philadelphia is a non-profit, community-based organization. We are all about helping people get to work. We are dedicated to helping individuals who have disabilities or who are faced with disadvantages such as welfare dependency, domestic violence homelessness and other special needs to become self-sufficient through meaningful work. With a comprehensive menu of services ranging from diagnostic vocational evaluation to job training programs, job coaching and employment placement and retention services, we help put individuals on the path to success. We've seen firsthand how powerful meaningful work is in increasing one's pride, dignity and independence.

Our Mission

To provide education, training and employment services that prepare individuals with disabilities and disadvantages for competitive employment in the community.



Goodwill Training Facilities

Extended Employment

7060 Colonial Highway
Pennsauken, NJ 08109
856-665-7270

Computer/Clerical Skills

2835 Route 73 South
Maple Shade, NJ 08052
856-439-0200

Ex-Offender Re-Entry Program/Computer-Clerical Skills/Customer Service-Retail Management

455 North 7th Street
Philadelphia, PA 19123
215-922-6807

School-to-Work

7186-7192-7194 North Park Drive
Pennsauken, NJ 08109
856-317-5847

CDL-B/Job Club/Helms Academy

222 White Horse Pike
Stratford, NJ 08084
856-566-5375

CORPORATE HEADQUARTERS

2835 Route 73 South
Maple Shade, NJ 08052

Phone: 856-439-0200

Fax: 856-439-0843



Mission Services

*Goodwill
Proud*



Richard Uyehara

Proud Member of the
Goodwill Contract
Services Team



Goodwill Career Services

Extended Employment

Provides participants with the opportunity to learn, to work and to earn a paycheck while performing light industrial duties under the supervision of rehabilitation specialists. All participants are paid for their work.



School-to-Work

Bridges the gap between academia and the workforce by providing classroom instruction and hands-on job training for students with special needs. The work experience part of this program helps prepare students for employment after high school graduation. All students are paid for their work.

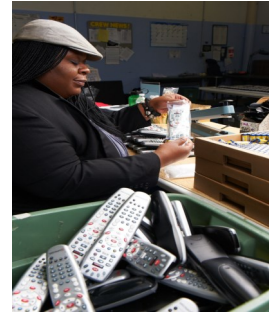
Commercial Driver's License- Class B (CDL-B)

Provides both classroom and behind-the-wheel instruction to prepare participants to become licensed school bus drivers. This program boasts a 100% placement rate upon successful completion.



Employment Services

- Supported Employment
- Job Placement Assistance
- Vocational Evaluation
- Vocational Assessment
- Work Adjustment Training
- Job Coaching
- Retention Services



Customer Service & Computer Literacy Program

Designed for the entry-level sales associate to improve skills related to frontline work in a retail environment. Curriculum is aligned with industry standards and the Professional Certifications in Customer Service and in Sales issued by the National Retail Federation (NRF).

NRF Retail Management/Operations & Computer Literacy Program

Designed for the new or emerging retail manager to improve skills related to managing and operating a retail enterprise. Curriculum is aligned with industry standards including the nationally recognized Professional Certification in Retail Management from the National Retail Federation (NRF).

Forklift Certification

Intensive one-day training session on safely operating three and four wheel counter-balanced lift trucks. Upon successful completion, participants receive a three-year certification.



Computer/Clerical Skills

Covers instruction in all Microsoft Office (Word, Excel, Access, and PowerPoint) programs to prepare participants for jobs in today's ever evolving automated office environment. Course takes place in a state-of-the-art computer lab and includes beginner and advanced instruction; keyboarding skills; and administrative office skills training.

Certiport Testing Center

Testing available for the following programs: MTA, MOS, QuickBooks, IC3, and Strata.

Job Club

A free community service that offers job seekers individualized career counseling and monthly workshops on relevant job search topics. To get started, participants must attend a small group orientation on the first or third Monday of the month at Goodwill's Stratford training center.

Helms Academy

Offers free courses to help adults attain their high school diploma while simultaneously earning college credits. Upon successful completion of this program, individuals earn a high school diploma and enough college credits to be halfway to completing an Associate's degree, if they choose to continue their education.

Ex-Offender Re-Entry Program

Provides previously incarcerated individuals with hands-on job training and a weekly paycheck. The focus is on building the participant's resume in preparation for competitive employment in the community.